

Programs and Partnerships: *Leading Reentry Services from the Inside Out Welcoming Partners from the Outside In*

The Reentry Bridge: Where Access Meets Opportunity
MACo Winter Conference
December 10, 2025

Montgomery County Department of Correction and Rehabilitation

Kendra Jochum, LCSW-C
Deputy Warden of Programs and Services



CRIMINAL JUSTICE SYSTEM AND REENTRY

State Criminal Justice System

- **Police**
- **Courts**
- **Local County Jails**
- **State Prisons**
- **Parole and Probation**

Why Focus on Reentry

- **Higher Rates of Unemployment**
- **Higher Rates of Homelessness**
- **Higher Rates of Mental Health and Substance Use Disorders**
- **Higher Generational Impact**
- **Higher Costs in the Billions to Communities**

MONTGOMERY COUNTY DEPARTMENT OF CORRECTION AND REHABILITATION

Detention Services Division

Montgomery County Detention Center in Rockville, MD

- Intake and Discharge, CPU, Commissioner, Remote Court Hearings, Pretrial Assessment, Limited Programs
- 200 Beds



Montgomery County Correctional Facility in Boyds, MD

- Flagship Facility, Full Programs and Services
- Maximum, Medium, and Minimum Classification
- 1029 Beds



Community Corrections Division

Pre Release Center in Rockville, MD

Pretrial Supervision

- Over 500 monitored pretrial basis

Pre-Release and Reentry Services

- Fully Sentenced Offenders within 12 Months of Release
- Screening Eligibility and Suitability
- Community Based Work Release Program



Medical and Behavioral Health Services Division

- Medical Health Services
- Mental Health Services

AVERAGE DAILY POPULATION INSIDE IS INCREASING

Detention Services Population Information

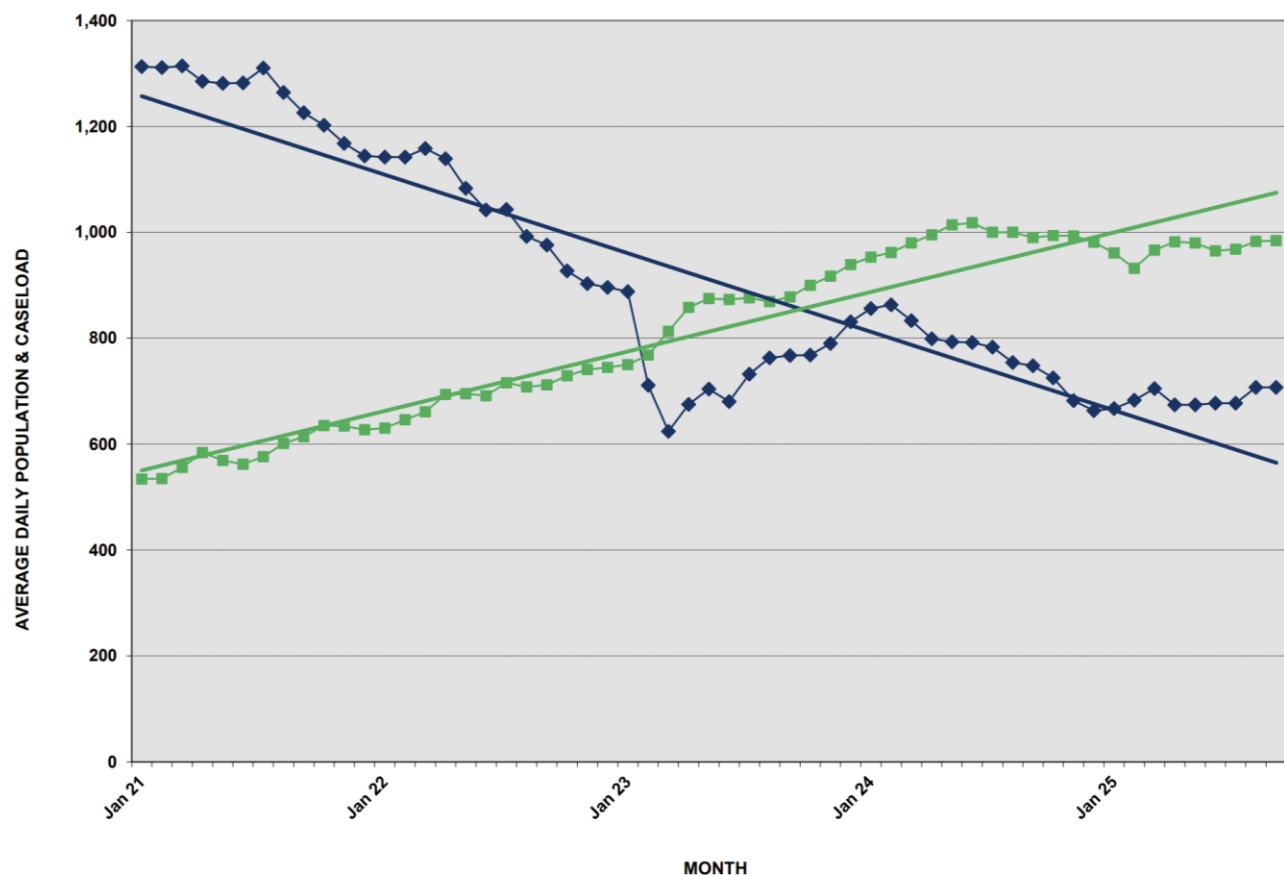
- The total current population in Detention Services (Montgomery County Detention Center (MCDC) and Montgomery County Correctional Facility (MCCF) as of April 15, 2025, is **927**. The average daily population for 2025 (through April 15) has decreased slightly from the 2024 average population, from 930 to 900.
- MCDC monthly average population has increased **61%** in the past 10 years from April 2015 to April 2025. In the past three years, from April 2022 to April 2025, the monthly average population has increased **144%**.
- MCCF monthly average population has increased **58%** since April 2015 and **26%** between April 2022 and April 2025.

Length of Stay and Processing Time Overview

Average length of stay has increased significantly over the past 10 years. Incarcerated individuals in FY24 (July 1, 2023, to June 30, 2024) had an average length of stay of **84 days**. Average length of stay for releases in FY20 (July 1, 2019, to June 30, 2020) was **62 days**. Average length of stay for releases in FY15 (July 1, 2014, to June 30, 2015) was **43 days**.

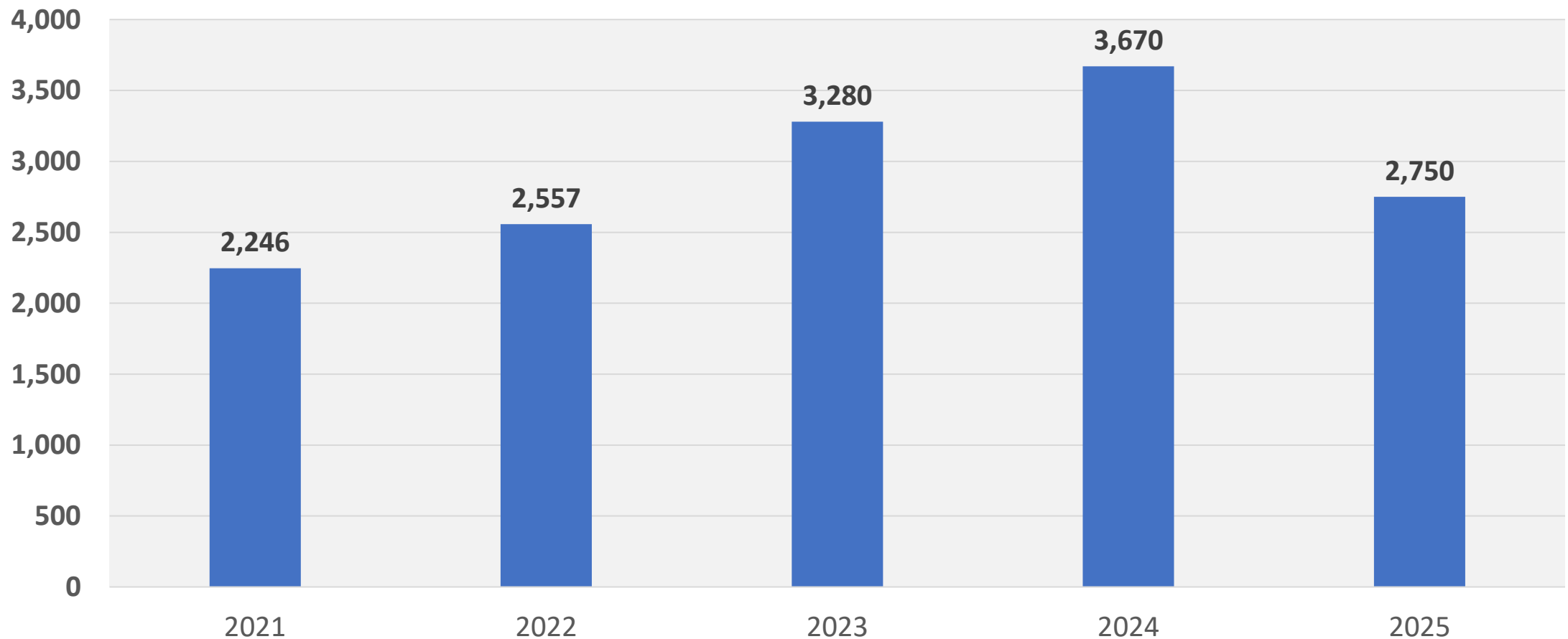


DEPARTMENT OF CORRECTION AND REHABILITATION
PRE-TRIAL AVERAGE DAILY CASELOAD *
DETENTION SERVICES AND PRE-RELEASE AVERAGE DAILY POPULATION
JANUARY 1, 2021 - SEPTEMBER 30, 2025



JAIL CHURN: MORE INTAKES, LONGER STAYS, HIGHER COUNT, MORE RELEASES, HIGH TURNOVER

Data from January 1, 2021 - September 30, 2025



HOW DO YOU WANT THEM BACK?

WHAT CAN BE DONE?

PROGRAMS AND PARTNERSHIPS

EDUCATION

- Montgomery County Public Schools
- Montgomery College

WORKFORCE DEVELOPMENT

- WorkSource Montgomery Dual Track Reentry Services
- MCCF American Job Center
- Facility Job Fairs
- Sweet Release Bakery Program

SUBSTANCE USE AND RECOVERY

- Department of Health and Human Services
- HHS Jail Addiction Services (JAS) and Community Aftercare
- Medication Assisted Treatment (MAT)
- Narcan Workshops, 12 Step Meetings
- Peer Recovery Specialists
- SMART Recovery

BEHAVIORAL HEALTH

- Department of Health and Human Services
- HHS Clinical Assessment and Transitional Services (CATS)
- Mental Health Therapists
- Diversion Services
- Choices for Change Program

REENTRY SERVICES

- Keys to Success Workshops
- Reentry Programs
- Individual Reentry Case Plans

VOLUNTEERS AND SELF ENRICHMENT

- 175 Active Volunteers, 51 Programs
- Peers, Guest Speakers

REENTRY FOR ALL

REENTRY FOR ALL

- Reentry Needs Intake Screening
- Reentry Resource Guides
- Sentenced and Pretrial Services
- Reentry Case Management
- Keys to Success Workshops and Programs
- Community Reentry Identification Card



REENTRY PARTNERS

- Program Contractors and Volunteer Facilitators
- Department of Health and Human Services
- Montgomery County Public Schools
- Montgomery College
- WorkSource Montgomery
- Social Security Administration
- MVA – Identification Card, Driver's License
- Department of Vital Records – Birth Certificates
- Department of Transportation
- Montgomery County Public Libraries
- Community Supervision – DPSCS Probation and Parole
- DPSCS Local Reentry Program
- Local Faith Community
- Conflict Resolution Center of Montgomery County
- Montgomery County EveryMind
- Montgomery County Coalition for the Homeless

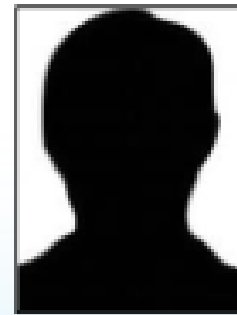
REENTRY KEYS TO SUCCESS PROGRAMS AND WORKSHOPS

- Anger Management
- Conflict Resolution Workshop
- Coping With Loss
- Expungement Workshop
- Financial Management
- Healthy Relationships
- Life Skills
- Mediation
- Mindfulness Yoga and Meditation
- MVA Clinic
- Parenting Programs
- Parole and Probation Orientation
- ServSafe Courses
- Sexual Health and Disease Prevention
- SMART Recovery - Addiction and Substance Use Support
- Victim Impact and Empathy
- 12 Step Recovery



COMMUNITY REENTRY IDENTIFICATION CARD

- Verified Address
- Provided Upon Released
- Valid for 60 Days
- Bridge for MVA, Reentry Release Letter
- Free Local Bus Transportation
- Library Card



COMMUNITY REENTRY IDENTIFICATION CARD



Issued: _____

Expires: _____

Name: _____ DOB: _____

Sex: _____ HT: _____ WT: _____ Eye Color: _____

Address: _____

Signature: _____

This Community Reentry Identification Card is issued by the Montgomery County Department of Correction and Rehabilitation. It is intended to assist a released person in establishing the basic services necessary for a successful reentry into our community. This card is a single source of identification until other forms of governmental identification are received. The person presenting this card has received resources to assist them in doing so in a timely manner. This card is not a valid source of identification past the expiration date and is not proof of citizenship.

For additional information contact 240 773 9910

By the authority of Robert L. Green
Director of the Department of Correction and Rehabilitation



MODEL LEARNING CENTER EDUCATIONAL SERVICES



- High School Education Services
- GED Classes and Onsite Testing
- Adult Basic Education
- Annual Graduation Ceremony

- ESOL Classes, English Conversation Club
- Vocational Classes
- Computer Lab
- Volunteers/Tutors

WORKSOURCE MONTGOMERY AMERICAN JOB CENTER AT MCCF



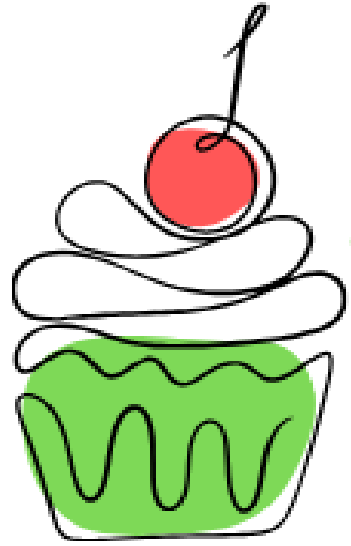
DUAL TRACK RE-ENTRY EMPOWERING THE JUSTICE-IMPACTED

- Job Readiness Programs
- 5 Week Program, Open Enrollment
- Resumes, Applications, Cover Letters, Interviews
- Computer Lab and Digital Learning
- Facility Job Fairs, Employer Interviews
- Personal Development Workshops
- Entrepreneurial Programs
- Communication and Professional Etiquette
- Individualized Support and Coaching
- Connection to Community Dual Track Program



A proud partner of the
americanjobcenter
network





Sweet Release

Bakery Program



- 8 Week Cohort at MCCF and PRC Facilities
- Baking and Cooking Instruction, Food Industry Skills
- ServSafe Food Handler and Manager Course Certifications
- Provides Community Catering Services
- Led by Correctional Dietary Program Manager
- Employment Connections Upon Release



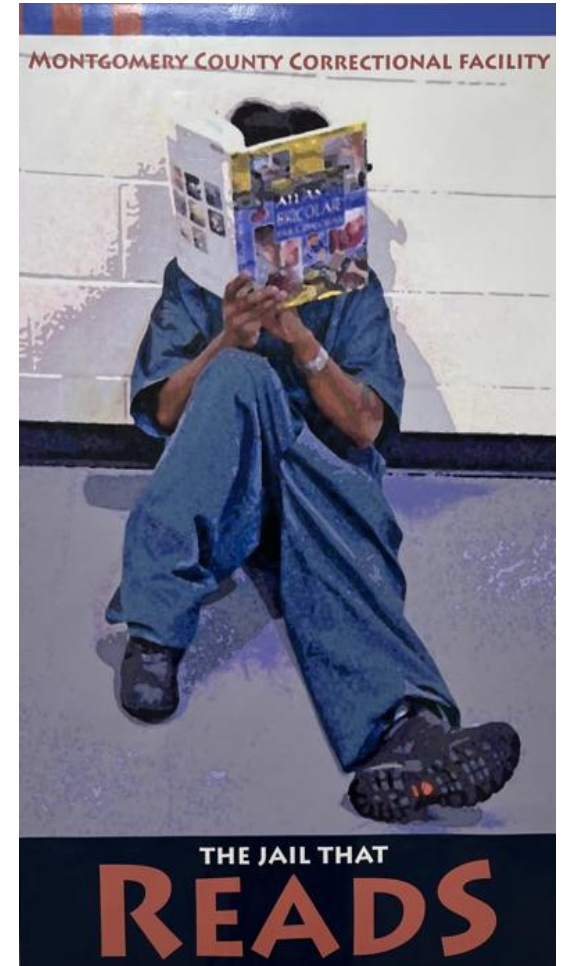
MONTGOMERY COUNTY PUBLIC LIBRARIES

MONTGOMERY COUNTY CORRECTIONAL LIBRARY



- In Person Recreational Library
- Law Library Resources
- Book Club Program

- Library Branch within MCPL System
- Community Library Resources
- Staffed by MCPL Librarians



FAMILIES AND CHILDREN

PARENTING PROGRAMS

- InsideOut Dad ®
- Parenting Inside Out®
- RealCare® Infant and Baby Care program



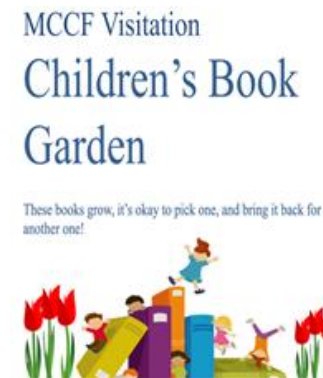
REENTRY STORYBOOK PROGRAM

Participants record themselves reading the book that is mailed to their child(ren) so they can hear their parent's voice reading them a story at home.



CHILDRENS BOOK GARDEN

The MCCF Library Children's Book Garden in Family Visiting area



WHO HAS A ROLE IN REENTRY?

Police

Courts

Corrections

Parole &
Probation

HHS

Treatment
Providers

Non-Profits

Faith
Community

Schools

Employers

Housing

Transportation

Families

Medical

Government

LOCAL LEADERSHIP, LASTING IMPACT: SHAPING WHAT'S NEXT

WHAT WORKS

- Identifying and Targeting Needs
- Individualized Services
- Access to Services and Support
- Reentry For All
- Person In Environment
- Spectrum of Programs
- Frequency and Duration
- From Intake to After Release
- Engage Peers, Partners, Volunteers
- Leverage Community Support
- Continuity of Care
 - Don't Reinvent
 - Bring Outside In
 - Connect to Outside